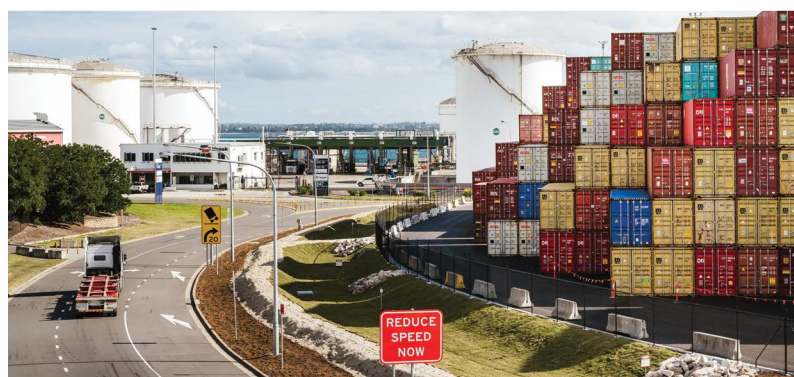




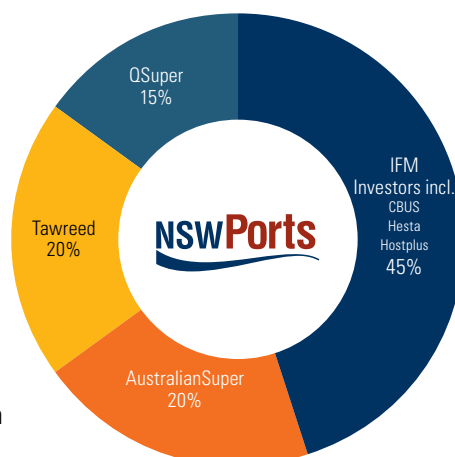
We keep Australia's economy moving



Who we are

NSW Ports is a consortium of leading institutional investors: IFM Investors (including Cbus, HESTA and Hostplus), AustralianSuper, QSuper and ADIA – Tawreed Investments Limited.

Our shareholders represent six million Australian superannuation fund members and are long term investors with interests in a range of Australian infrastructure assets.



Our role

We are port managers, responsible for: leasing land to port and logistics operators; strategic port planning; shipping access; wharf infrastructure; and common user road and rail infrastructure at the ports. We also have responsibility for landside precinct security and safety and operating control of the bulk liquids and multi-user berths.

By taking a long-term and sustainable approach to operations, we are committed to meeting the State's growing trade needs as well as supporting the environment and communities in which we operate and work.



We manage Australia's key trade gateways

NSW Ports holds long term leases to manage Port Botany, Port Kembla, Enfield Intermodal Logistics Centre and Cooks River Intermodal Terminal.

Our ports and intermodal facilities are strategic economic assets for Australia, and are critical to the current and future economic prosperity of New South Wales:



We contribute \$4.4 billion annually

to New South Wales'
Gross State Product



Our assets support around 30,000 jobs

33% of Port Botany employees; and
99% of Port Kembla employees
live locally



Responsible for handling

around 1/3 of Australia's container
trade and nearly all (99.6%) of
New South Wales' container trade

42% of all goods in a Sydney
household are imported in
containers through Port Botany



Operate 24/7

to import goods to support
the people and businesses of
New South Wales and export
goods to international markets

Our Assets



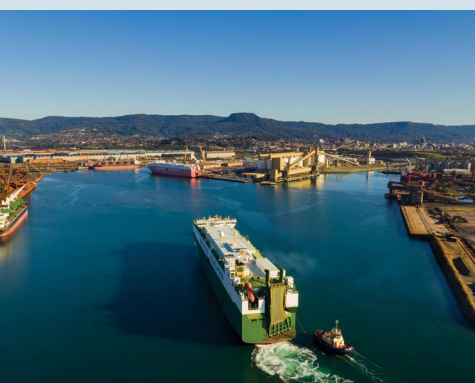
Port Botany

Australia's Premier Port

Located within Australia's largest population centre, Port Botany is a key trade gateway for the nation.

Port Botany is New South Wales' container port, the State's primary bulk liquid and gas port and Australia's largest multi-user bulk liquids facility.

The Port operates 24/7 to import goods to support the people and businesses of New South Wales and to export goods to international customers.



Port Kembla

The Port of Growth for New South Wales

Port Kembla is a key infrastructure asset for New South Wales and an economic driver for the Illawarra region.

Port Kembla is New South Wales' motor vehicle import hub and the largest grain export terminal in the State. The Port handles the import/export of minerals, bulk and liquid bulk cargo.

Port Kembla has been approved by the NSW Government as the site of New South Wales' next container terminal once Port Botany nears capacity. Its proximity to Sydney and access to Western Sydney and South West Sydney mean Port Kembla is well positioned to handle the expected growth in freight volumes.



Enfield Intermodal Logistics Centre

A key logistics hub servicing Sydney and New South Wales

The Enfield Intermodal Logistics Centre is an intermodal terminal and warehousing facility, centrally located just west of Sydney's CBD.

Located within an industrial area, it offers direct and regular connections into Port Botany on dedicated freight-only rail, and rail connections to regional areas of New South Wales. Enfield Intermodal Logistics Centre is being developed as a key logistics hub to support Sydney's growing container transport needs.



Cooks River Intermodal Terminal

The largest empty container storage facility in New South Wales

Cooks River Intermodal Terminal plays an important role in Port Botany's supply chain and the overall New South Wales' container freight logistics task.

As the State's largest empty container park, also connected by dedicated freight rail to Port Botany, Cooks River Intermodal Terminal is a key off-port facility for handling containers.

Cooks River Intermodal Terminal offers direct and regular connections to Port Botany.

Our vision

Be a world class port and logistic manager driving sustainable growth

Our approach

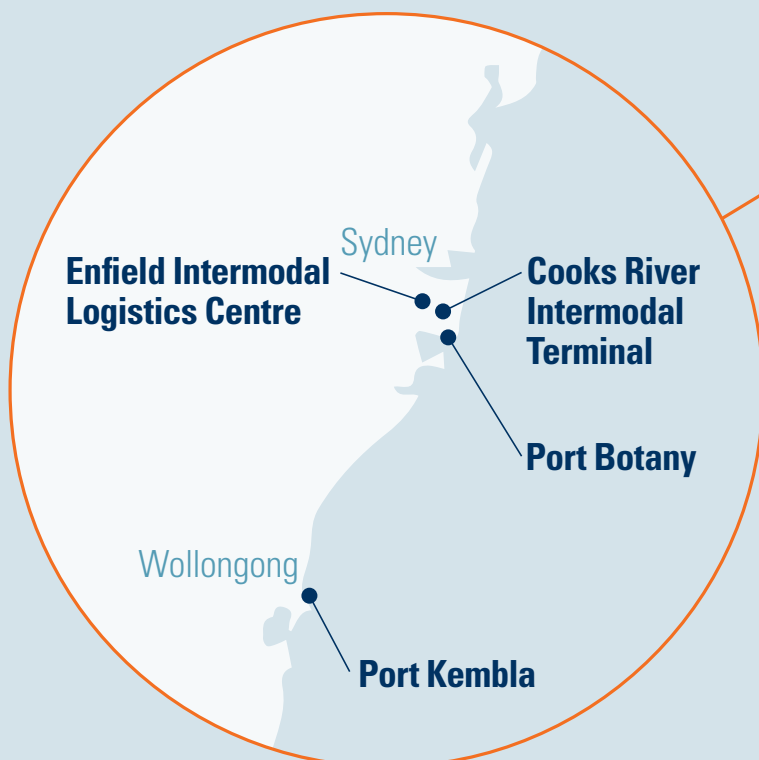
Manage key trade gateways connecting you to global and domestic markets

Our values

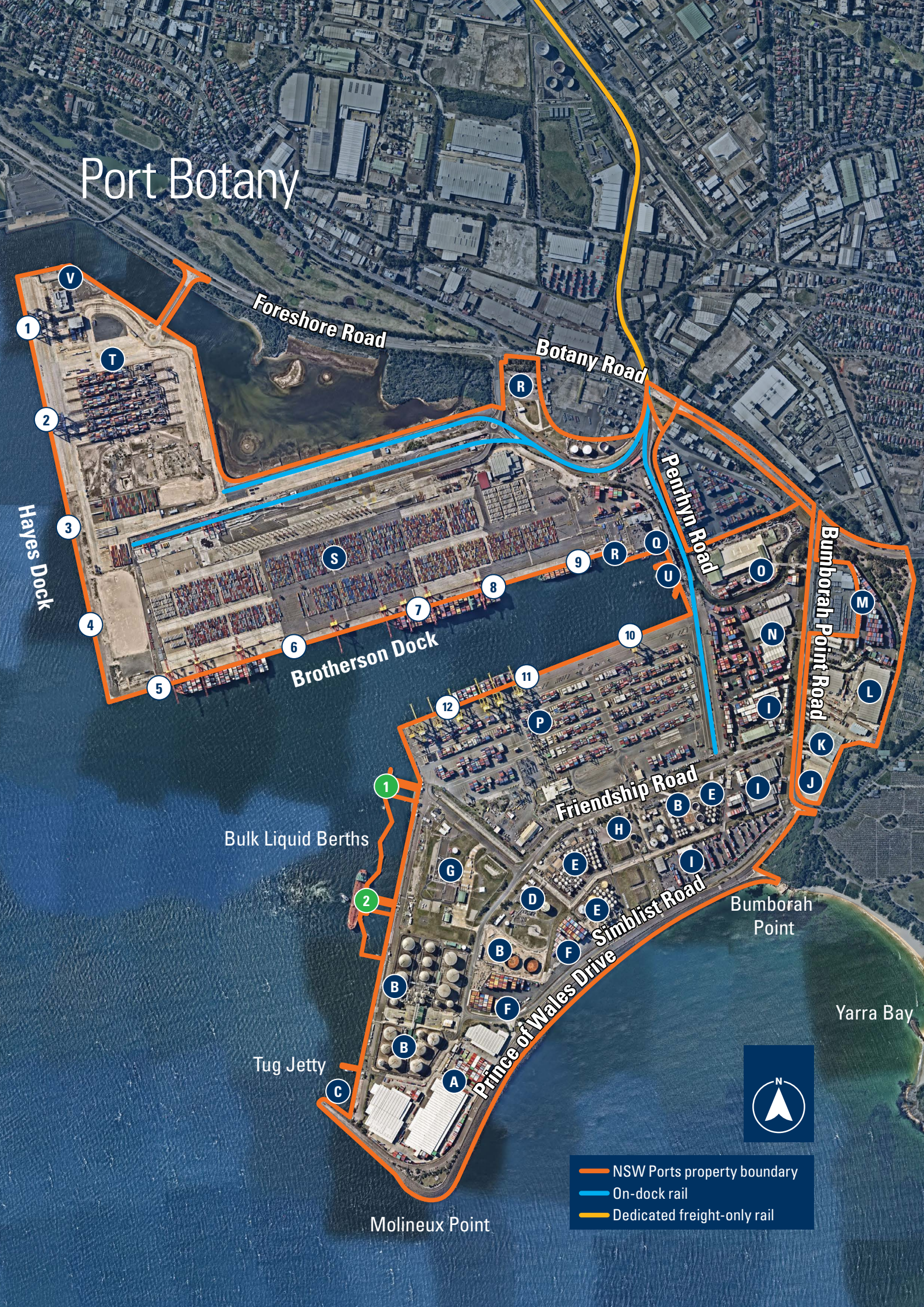
Care | Collaboration | Passion | Integrity | Accountability

Our purpose

Keep
Australia's economy
moving



Port Botany



Hayes Dock

Foreshore Road

Botany Road

Penhryn Road

Bumbarah Point Road

Brotherson Dock

Bulk Liquid Berths

Friendship Road

Simblist Road

Prince of Wales Drive

Bumbarah Point

Tug Jetty

Yarra Bay

Molineux Point



- NSW Ports property boundary
- On-dock rail
- Dedicated freight-only rail

Port Botany is Australia's premier port, handling around one third of the nation's container volume and nearly all (99.6%) of New South Wales' container volume. The Port is also home to Australia's largest multi-user bulk liquids facility, supporting New South Wales' bulk liquid and gas needs.

Capabilities



80% of all import containers travel no further than 40 kilometres from Port Botany. Nearly half (42%) of all goods in a Sydney household have been imported in containers through Port Botany – including food, beverages, footwear, flooring, mattresses, paints, fridges, televisions and toys.



Current port infrastructure supports vessels up to 15,000 TEUs today.

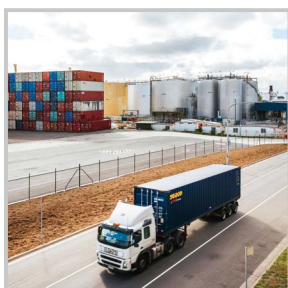
The port's deep water shipping channel, and short transit to and from berth facilities allows for efficient and reliable services.



The only port in Australia with on-dock freight rail at every container terminal, which increases efficiency and removes the need for double handling by trucks.



Home to container related services including empty container parks, transport operations, warehouse facilities and Australian Customs.



The only container port in Australia with a regulated truck booking and penalty system, delivering world class truck turn-around times along with savings for importers and exporters.



Pipeline access to Sydney Airport, nearby industrial precincts and regional New South Wales.

Port Botany Occupants

- A** ACFS e-Link
- B** Vopak Terminals Sydney
- C** Smit Lamnalco
- D** Qenos
- E** Quantem
- F** Tyne Container Services

- G** Elgas
- H** Origin Energy
- I** ACFS E-Depot
- J** Truck Marshalling Area
- K** Department of Home Affairs
- L** Trojan Transport Services & Associated Customs and Forwarding

- M** Tyne ACFS
- N** DP World Australia
- O** AST Services
- P** DP World Australia
- Q** Svitzer Australia
- R** Ampol

- S** Patrick Terminals – Sydney Autostrad
- T** Hutchison Ports Sydney
- U** NSW Ports – Brotherson House
- V** Australian Port Services
- 1** Berth Numbers
- 1** Bulk Liquids Berth Numbers

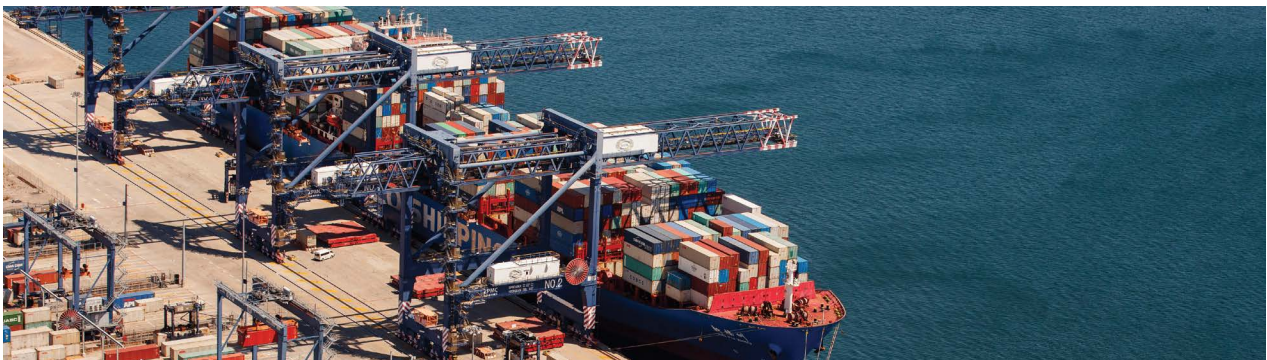
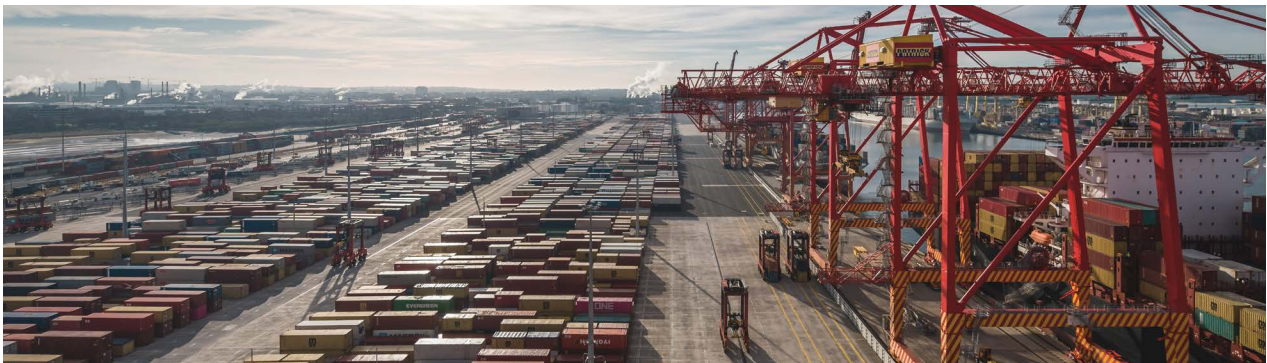
Port Botany Facilities

Container Terminals

The primary trade through Port Botany is containers. The Port currently handles more than 2.5 million Twenty Foot Equivalent Units (or TEUs, which is the standard measurement of a container) annually, with capacity for over 7 million TEUs.

Features:

- 3 container terminals, operated by independent stevedores – DP World Australia (Brotherson Dock), Patrick Terminals (Brotherson Dock), Hutchison Ports (Hayes Dock)
- 12 container vessel berths
- 3,793 metres of container quay line
- Dedicated on-dock freight rail at all three container terminals – connecting to a network of Sydney metropolitan intermodal terminals and regional rail network.



Bulk Liquids and Gas Facilities

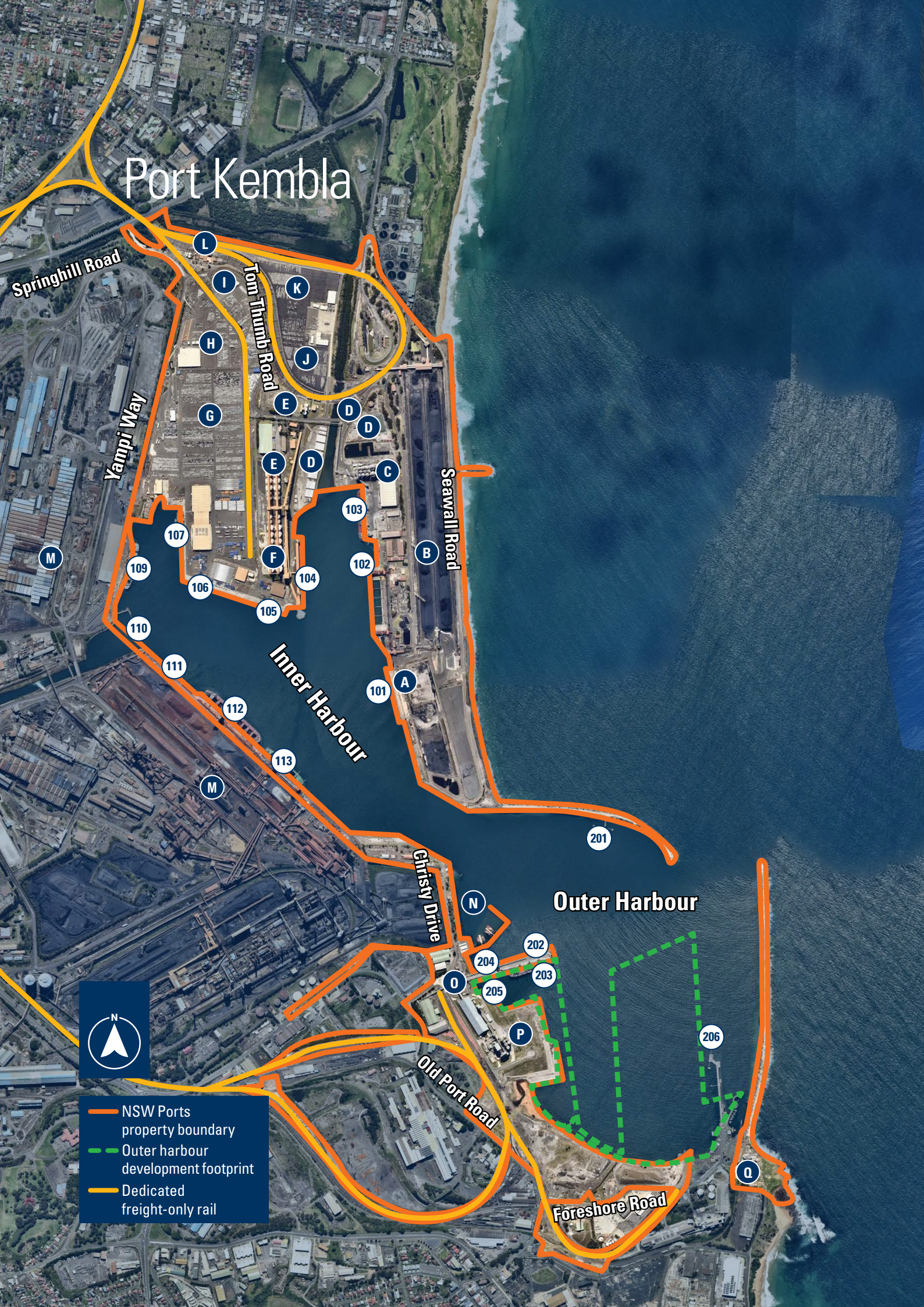
Port Botany is the primary bulk liquid and gas port in New South Wales and Australia's largest dedicated multi-user bulk facility. The Port's bulk liquid precinct handles over 5.5 million kilolitres of bulk liquids and gas each year.

Features:

- 2 bulk liquid berths – Bulk Liquid Berth 1 and Bulk Liquid Berth 2 which are multi-user berths handling refined fuel, gas, chemicals and bitumen
- Direct pipeline access to nearby storage facilities and nearby industrial precincts
- Gas infrastructure able to store more than 65,000 tonnes of LPG – enough to heat 350,000 homes for a year.



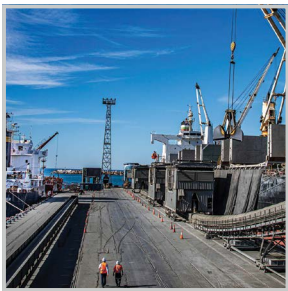
Port Kembla



Port Kembla is an international trade gateway for bulk agricultural, construction and mining industries. It is New South Wales’ motor vehicle import hub and home to the state’s largest grain export terminal.

The port operates across two precincts – the Inner Harbour and the Outer Harbour.

Capabilities



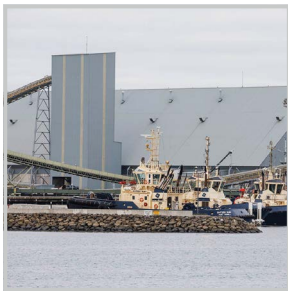
In close proximity to Sydney’s growing population and employment lands – Port Kembla is 90 kilometres south of Port Botany, 67 kilometres to South West Sydney and 100 kilometres to Western Sydney.



Capable of handling large cargo and capesize vessels.



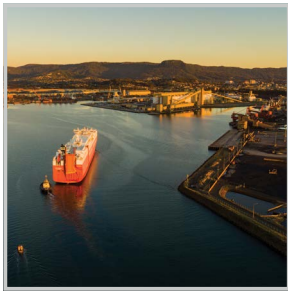
Road and rail connections to Greater Sydney, the Illawarra and regional New South Wales.



Excellent supply of well-connected nearby industrial land to support key trades and port-related activities.



Approved by the NSW Government as New South Wales’ next container port once Port Botany nears capacity.



Short, deep water shipping channel that minimises vessel transit time and contributes to port efficiency.

Port Kembla Occupants

- A** Australian Industrial Energy (AIE)
- B** Port Kembla Coal Terminal
- C** Quattro
- D** TQ Holdings
- E** GrainCorp

- F** Falcon Cement
- G** Australian Amalgamated Terminal (AAT)
- H** Autocare
- I** PrixCar

- J** AutoNexus
- K** Ceva Logistics
- L** Pacific National
- M** BlueScope
- N** Svitzer

- O** Port Kembla Gateway
- P** Cement Australia
- Q** NSW Ports – Maritime Centre
- 1** Berth Numbers

Port Kembla Facilities

Multi-User Berths



Car Import & General Cargo Terminals (Inner Harbour)

Australian Amalgamated Terminals (AAT) manage four berths (103, 105, 106 and 107) within two terminals in Port Kembla's Inner Harbour. The main terminal is designed as a multi-purpose facility, equipped to manage the large volume of motor vehicles and general cargo moving through the port. The facility can also cater for containers.

Features:

- Berth 107 is purpose-built to accommodate Roll-on/Roll-off (RoRo) vessels up to 270 metres length
- A high capacity fully land backed ramp pad that will accept heavy and oversize project cargo
- Total combined quay length of Berth 105 and Berth 106 is 510 metres, allowing two general car carriers to moor simultaneously. Both berths are designed to enable unloading of RoRo, Lift-on/Lift-off (LoLo) and bulk cargo vessels.



Grain Terminals (Inner Harbour)

Port Kembla is home to the State's largest grain export terminal. The port has two grain facilities located in the Inner Harbour, including storage and handling capability for bulk grain exports.

Features:

- GrainCorp operates the Port Kembla Grain Terminal which is the largest export grain terminal on the east coast of Australia. It is located adjacent to Berth 104, a multi-user berth managed by NSW Ports
- Quattro Ports operates the bulk grain handling facility adjacent to Berth 103
- Both facilities have the capability to receive and dispatch products by ship, rail and road and export a variety of grains from the New South Wales market.



Bulk Liquids Facilities (Outer Harbour)

NSW Ports owns and operates Berth 201, which is a multi-user bulk liquids berth located in Port Kembla's Outer Harbour.

Features:

- Berth 201 has an available berth length of 200 metres and is primarily used for handling refined fuels and chemicals including ethanol
- Direct pipeline access to nearby storage facilities
- Additional bulk liquid facility, adjacent to Berth 104 in the Inner Harbour. This facility is operated by GrainCorp and handles a range of liquid products including chemicals and oils.



Bulk Liquids Facilities (Outer Harbour)

NSW Ports owns and operates Berth 206, which is a multi-user bulk liquids berth located in Port Kembla's Outer Harbour.

Features:

- Berth 206 has an available berth length of 220 metres and is used for handling sulfuric acid
- Direct pipeline access to nearby storage facilities.

Dedicated Berths



Dry Bulk & Break Bulk Facilities (Outer Harbour)

Port Kembla Gateway operates four berths in the Outer Harbour (202, 203, 204 and 205) and is a multi-user facility. It is primarily used for bulk and break bulk cargoes and is capable of handling mineral concentrates, fertiliser, cement clinker, logs and steel products.

Features:

- The berths provide an available berth length of 360 metres with a varying depth alongside
- There is also undercover storage capacity at the facility.

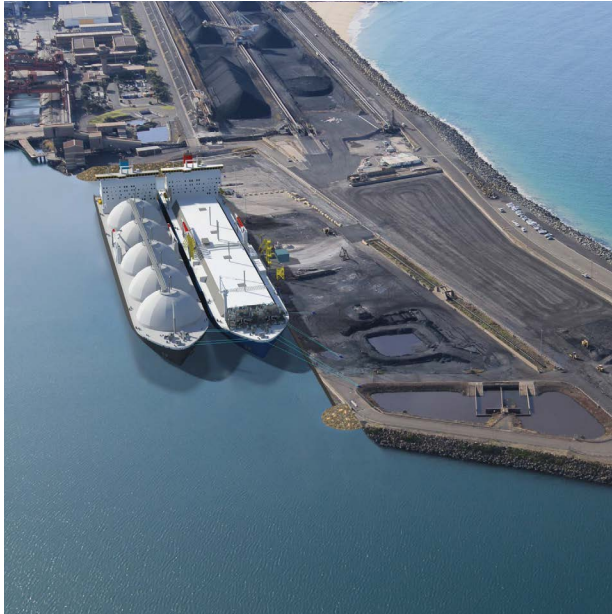


Coal Terminal (Inner Harbour)

Port Kembla is a key coal exporting facility for New South Wales. Port Kembla Coal Terminal (PKCT) services the state's Southern and Western coalfields and is a key coal exporting facility on Australia's east coast.

Features:

- The coal terminal operates Berth 102, with road and rail receipt facilities
- Capesize vessels of 300 metres length load by gantry ship loaders.



Port Kembla Gas Terminal (Inner Harbour)

NSW Ports has signed a long-term lease with Australian Industrial Energy to construct and operate Australia's first LNG Import Terminal at Port Kembla. Construction is forecast to take up to 20 months, putting the project on track to supply more than 75% of New South Wales' gas needs by the end of 2022. The development brings a new trade to Port Kembla, providing diversification and growth in shipping for the Illawarra region.

Features:

The Port Kembla Gas Terminal will comprise:

- LNG carrier vessels
- Floating storage and regasification unit (FSRU)
- Wharf facilities
- Pipeline connection to the existing East Coast Gas Pipeline which is a major natural gas arterial between Victoria and New South Wales.



Bluescope Inner Harbour)

BlueScope is a flat steel producer for the domestic Australian, New Zealand and United States markets. BlueScope operates five berths in the Inner Harbour (109, 110, 111, 112 and 113) handling cargo including steel, raw materials, dolomite and other products.

Features:

- Berth 109 is 260 metres long and 35 metres wide
- Berth 110 is 145 metres long and 35 metres wide
- Berth 111 is 285 metres long and 50 metres wide
- Berth 112 is 300 metres long and 50 metres wide
- Berth 113 is 190 metres long and 50 metres wide.

Enfield Intermodal Logistics Centre



The Enfield Intermodal Logistics Centre is an intermodal terminal and warehousing facility, centrally located just 15 kilometres west of Sydney's CBD.

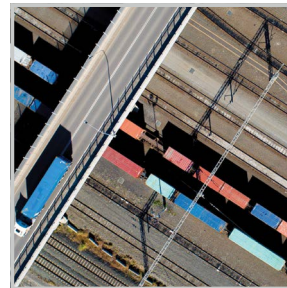
Located within an industrial area, it offers direct and regular connections into Port Botany on dedicated freight-only rail, and rail connections to regional areas of New South Wales. Enfield Intermodal Logistics Centre is being developed as a key logistics hub to support Sydney's growing container transport needs.

Capabilities

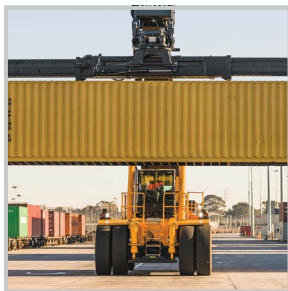


Located close to Port Botany on direct and dedicated freight rail.

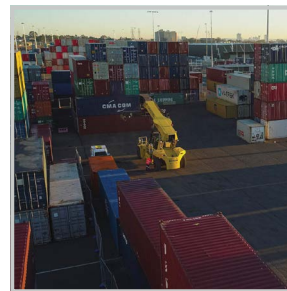
Rail connectivity enables container triangulation by rail – saving time and creating efficiency.



Located on, and accessible from key arterial road infrastructure, including the Hume Highway, Roberts Road, M5 and M4 motorways, with B-Double access.



Significant capacity to handle additional container volumes to service the needs of Port Botany and to cater to future growth in the area.



Industrial lots and empty container storage areas within the site allow efficient transfer operations.

Facilities

Intermodal Terminal

The Intermodal Terminal commenced operations in 2016 and has been operated by the LINX Cargo Care Group since 2018. It provides a full range of container services including full and empty container storage, washing and upgrades.

Features:

- Dedicated freight rail link to Port Botany and rail connection to the national network
- Accommodates 900 metre trains
- 1,800 metres of throughline for the management of longer trains
- 14 hectares of Intermodal Terminal
- 46 hectares of operational land
- Empty container storage facilities
- Connectivity to the Southern Sydney Freight Line
- An enabler for regional rail exports.

Warehousing and facilities

The Enfield Intermodal Logistics Centre is being developed as a key logistics hub with industrial lots for logistics, freight forwarding, pack-unpack, transport and warehousing. Staged construction of 14 warehouse buildings across eight precincts commenced in mid-2018.

Features:

- Perfect for companies with fast moving and time sensitive goods, that need quick and easy accessibility to Sydney's CBD
- All warehouses incorporate rainwater collection tanks, solar hot water systems, LED lighting, and low-maintenance vegetation that supports local biodiversity.

Cooks River Intermodal Terminal



Princes Highway

Canal Road

A

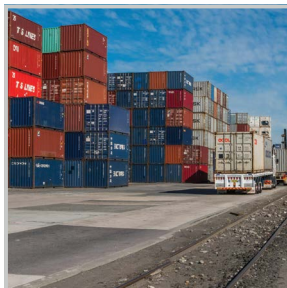


- NSW Ports property boundary
- Dedicated freight-only rail

Cooks River Intermodal Terminal plays an important role in Port Botany's supply chain and the overall New South Wales container freight logistics task.

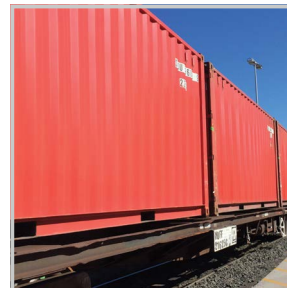
As the State's largest empty container park, also connected by dedicated freight rail to Port Botany, Cooks River Intermodal Terminal is a key off-port facility for handling containers.

Capabilities



Close to Port Botany – 8 kilometres on direct and dedicated freight rail and 10 kilometres by road.

Accessible from key arterial road infrastructure including the Princes Highway, M5 Motorway and Eastern Distributor.

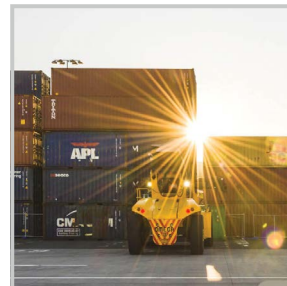


Rail connectivity enables container triangulation by rail – saving time and creating efficiency.

An enabler for export regional rail.



Capacity to handle additional container volumes to service the needs of Port Botany.



Located opposite the WestConnex St Peters Interchange to provide a direct connection to the M4 Motorway and a more direct connection to the M5 Motorway.

Facilities

Container Storage & Services

The largest empty container storage facility in New South Wales on 17.2 hectares of land.

Features:

- Provides container storage, repair, washing and upgrading of empty containers and other ancillary services
- 14,000 TEU capacity.

Rail Connectivity

An intermodal terminal offering direct and regular connections into Port Botany on dedicated freight-only rail, and rail connections to regional areas of New South Wales.

Features:

- Dedicated freight rail link to Port Botany and rail connection to the national network
- An enabler for regional rail
- Connectivity to the Southern Sydney Freight Line.

Cooks River Intermodal Terminal Occupants

-  Maritime Container Services



www.nswports.com.au

1300 922 524

enquiries@nswports.com.au

Port Botany

Port Botany Office
Gate B103, Level 2, Brotherson House
Penrhyn Road
Port Botany NSW 2036
Australia

Port Kembla

Port Kembla Office
Level 3, Maritime Centre,
91 Foreshore Road
Port Kembla NSW 2505
Australia